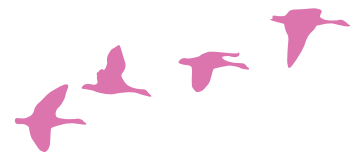


4warned

Update 43 - August 2007



Are your Instructions Received and Understood?

With the increasing number of non-English speaking workers entering the labour force within the UK, adult literacy still an issue, and health and safety issues still requiring our utmost attention, getting your message across is vital. Throughout many industries, there is evidence that poor information and communication is responsible for causing injury to workers and costs to employers.

A recent report revealed that up to 12 million workers within the UK had the reading and numeracy skills of primary school children. Coupled with rising numbers of the workforce who do not have English as their first language, this creates a real challenge for employers. The tendency in the workplace is to bombard the workforce with health and safety information via signs, notices etc.. The real challenge for employers is to ensure that messages are clearly communicated and understood, rather than bombard the workforce with a supply of meaningless information that is very rarely read. How do you ensure your message is received and understood?

Nowadays, on reputable sites, it is normal to arrive for work and receive an induction, go through a tool box talk and receive a written copy of the safe system of work. Following this, the workers sign a form to confirm that they have received and understood the information that they have received. This process is still very important, but more is required if we are to affect cultural and behavioural safety and strive for continuous improvement.

Many high profile work areas are focusing on getting the message across with the use of signage which has minimal text and concentrates on pictorial messages. In this format information is conveyed in an effective way, regardless of education or language barriers.

A recent study has been conducted by the HSE on a number of sites to determine the success of a pictorial information campaign. It was found that site operatives were far more aware of the messages being conveyed and were more aware of the messages due to repeated exposure. Among other benefits, it was also noted that the messages had a positive affect on the behaviour of the workers.

Currently the construction industry is the focus of the campaign, but this method is transferable across a range of industries. The HSE will continue to work closely with the construction industry to ensure that messages get properly conveyed and that they are clearly understood.

For more information or advice on this subject, please feel free to contact 4See Risk Management on 01908 263336 or email enquiry@4seerisk.com

The HSE also produce a number of documents for use in the workplace in many languages. These can be found at www.hse.gov.uk

HSE Health and Safety Executive

Przyjechałeś do pracy w Wielkiej Brytanii z zagranicy?

Twoje bezpieczeństwo i higiena pracy w rolnictwie i przetwórstwie żywności

Wprowadzenie

- Pracując w Wielkiej Brytanii musisz być świadomy, że w Wielkiej Brytanii obowiązują inne przepisy dotyczące bezpieczeństwa i higieny pracy niż w Twoim kraju.
- Pracodawca musi zapewnić Ci odpowiednie szkolenie i instrukcje.
- Pracodawca musi zapewnić Ci odpowiednie narzędzia i sprzęt.
- Pracodawca musi zapewnić Ci odpowiednie środki ochrony indywidualnej.

Co może zrobić Twój pracodawca

Awarie i szkody

- Pracodawca musi zapewnić Ci odpowiednie szkolenie i instrukcje.
- Pracodawca musi zapewnić Ci odpowiednie narzędzia i sprzęt.
- Pracodawca musi zapewnić Ci odpowiednie środki ochrony indywidualnej.

Zmniejszenie ryzyka

- Pracodawca musi zapewnić Ci odpowiednie szkolenie i instrukcje.
- Pracodawca musi zapewnić Ci odpowiednie narzędzia i sprzęt.
- Pracodawca musi zapewnić Ci odpowiednie środki ochrony indywidualnej.

Przebieg choroby

- Pracodawca musi zapewnić Ci odpowiednie szkolenie i instrukcje.
- Pracodawca musi zapewnić Ci odpowiednie narzędzia i sprzęt.
- Pracodawca musi zapewnić Ci odpowiednie środki ochrony indywidualnej.

Twoje obowiązki

- Pracodawca musi zapewnić Ci odpowiednie szkolenie i instrukcje.
- Pracodawca musi zapewnić Ci odpowiednie narzędzia i sprzęt.
- Pracodawca musi zapewnić Ci odpowiednie środki ochrony indywidualnej.

